

3000

ALEJANDRO · REY · COLAÇO

# CANTO · DE · LA · TRILLA

Valentim de Carvalho  
Assunção 37 Lisboa



A mi hija Alice.

# La Trilla.

Cancion popular murciana.

Alej. Rey Colaço.

Lentamente ad libitum.

Canto.

Piano.

*fp* *rit. molto*

Detailed description: This system shows the beginning of the piece. The vocal line (Canto) is on a single staff with a treble clef, starting with a whole rest. The piano accompaniment (Piano) is on two staves (treble and bass clefs) with a 6/8 time signature. It begins with a series of chords in the right hand and a rhythmic pattern in the left hand. Dynamics include *fp* (fortissimo piano) and *rit. molto* (ritardando molto).

§

Dos so - les son los o - jos de u - na mo -  
Tan gran - des y tan ne - gros, quien se a - bra -

*fp* *p*

Detailed description: This system contains the first line of lyrics. The vocal line continues with a melody that fits the lyrics. The piano accompaniment provides harmonic support with chords and a steady bass line. Dynamics include *fp* and *p* (piano).

re - na de u - na mo - re - na ai!  
sa - ra quien se a - bra - sa - ra ai!

*f*

Detailed description: This system contains the second line of lyrics. The vocal line continues with a melody that fits the lyrics. The piano accompaniment provides harmonic support with chords and a steady bass line. Dynamics include *f* (forte).

tan gran - des y tan  
en el fue - go di -

*ff* *rit. pesante* *fp*

ne - gros  
vi - no

*poco accelerando*

*con passione*

co - mo mis pe - nas ai!  
de su mi - ra - da ai!

*sf* *molto dim. e rit.*

*ppp*

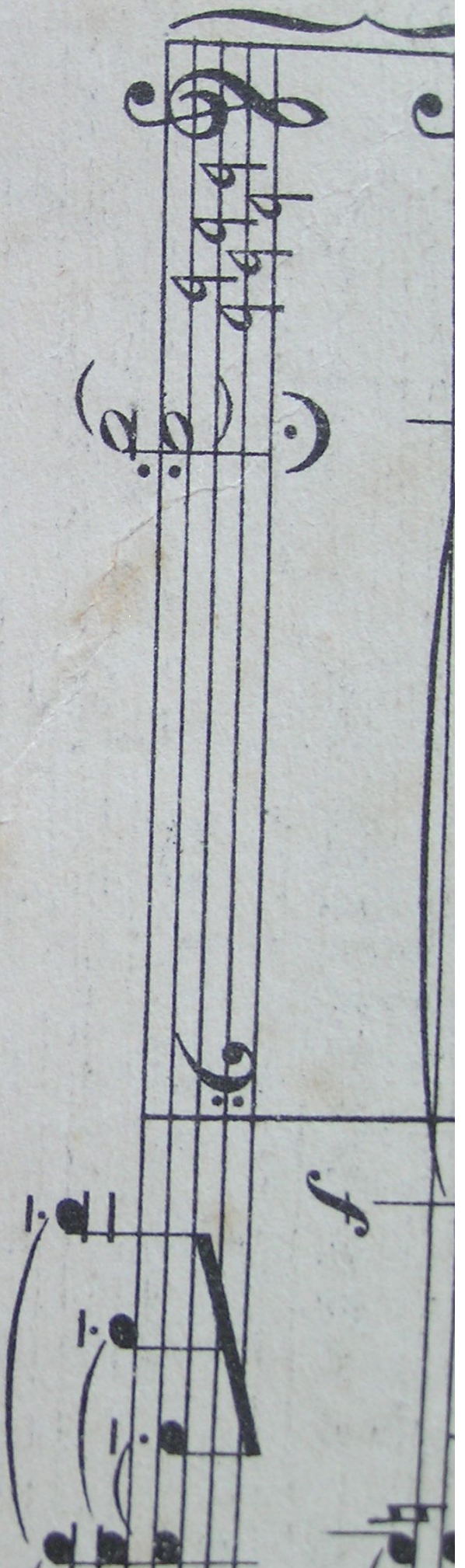
*D.C. al §*



A mi hija Alice.

Isabella

Propriedade registada.  
Protegida no Brazil pela lei no. 2577 de 17 de Janeiro de 1912.



82246

Oscar Brandstetter, Leipzig

ATRO

24148