

= Fado do Gaanga =

RAFFAELLO SEGRE

Director do Orchestra do

EDEN-THÉATRO

BELEM-PAR

(BRAZIL)



Alto-Moth

Handwritten musical notation for the first system. It consists of two staves. The top staff has a treble clef and a common time signature (C). The bottom staff has a bass clef and a common time signature (C). A female symbol (♀) is written above the first measure of the top staff. The music is in a key with one sharp (F#).

Handwritten musical notation for the second system. It consists of two staves. A double bar line with a repeat sign is present at the beginning of the system. A dynamic marking 'p' (piano) is written above the first measure of the top staff. The music continues in the same key and time signature.

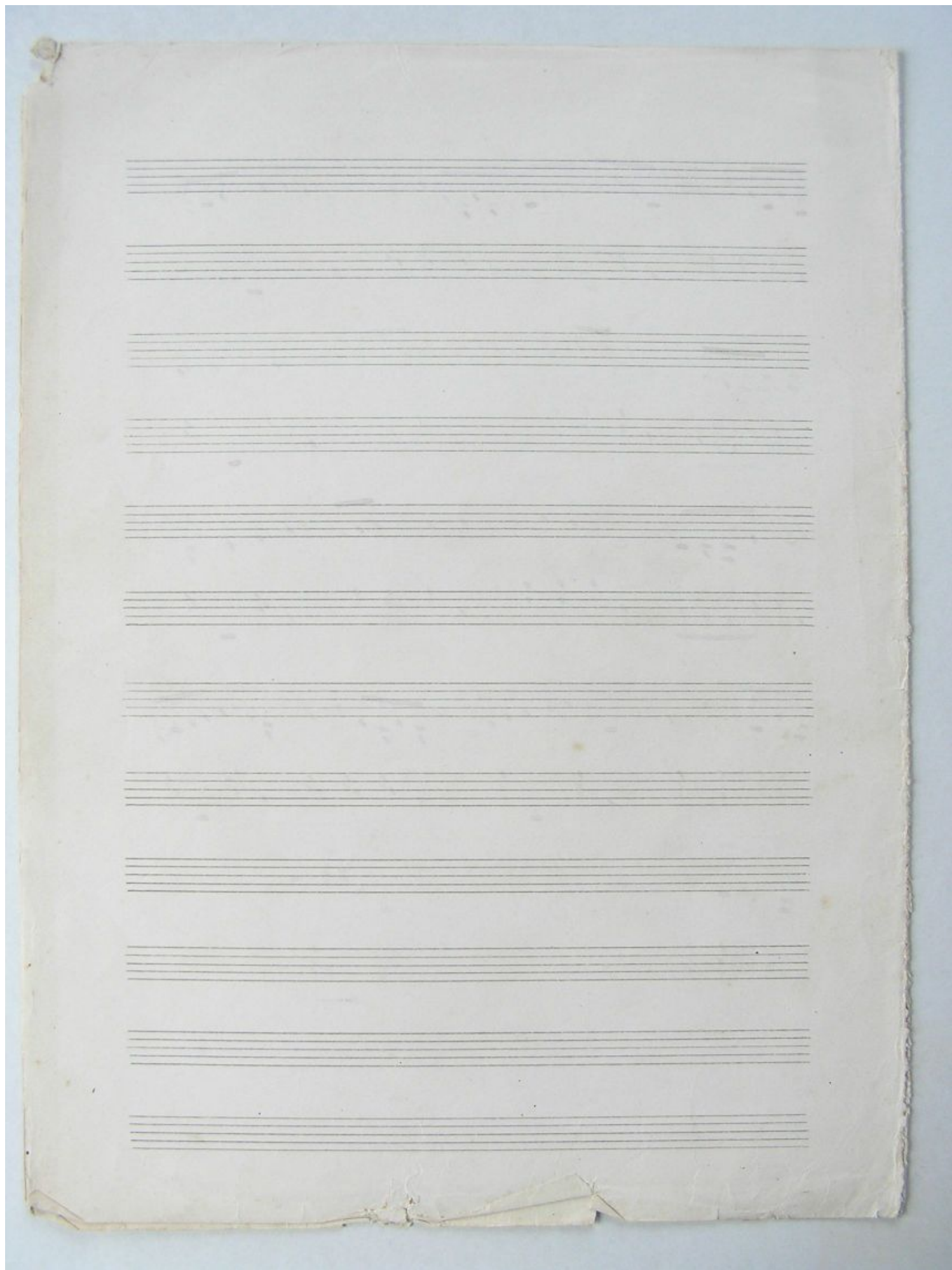
Handwritten musical notation for the third system. It consists of two staves. The top staff shows a melodic line with eighth and sixteenth notes. The bottom staff provides accompaniment with chords and single notes.

Handwritten musical notation for the fourth system. It consists of two staves. A key signature change to two sharps (F# and C#) is indicated by two sharp signs at the beginning of the system. A dynamic marking 'p' is written above the first measure of the top staff.

Handwritten musical notation for the fifth system. It consists of two staves. A dynamic marking 'mf' (mezzo-forte) is written above the first measure of the top staff. A 'Poco' marking is written above the first measure of the top staff.

Handwritten musical notation for the sixth system. It consists of two staves. The top staff shows a melodic line with eighth and sixteenth notes. The bottom staff provides accompaniment with chords and single notes.

RAFFAELLO SEGRE
Director of Orchestra in
EDEN THEATRO
BELEM-PARA
(BRAZIL)



RAFFAELLO SEGRE

Director of Orchestra do

EDUARDO MATEO

MILWAUKEE



(BRAZIL)



RAFFAELLO SEGRE

Director da Orchestra do

EDUARDO PRATA

DEBEM VIVA

(BRAZIL)



1 井 2 人

RAFFAELLO SEGRE

Director of Production

EDEN-THIETRO

BELEM-PARA

(BRAZIL)



RAFFAELLO SEGRE

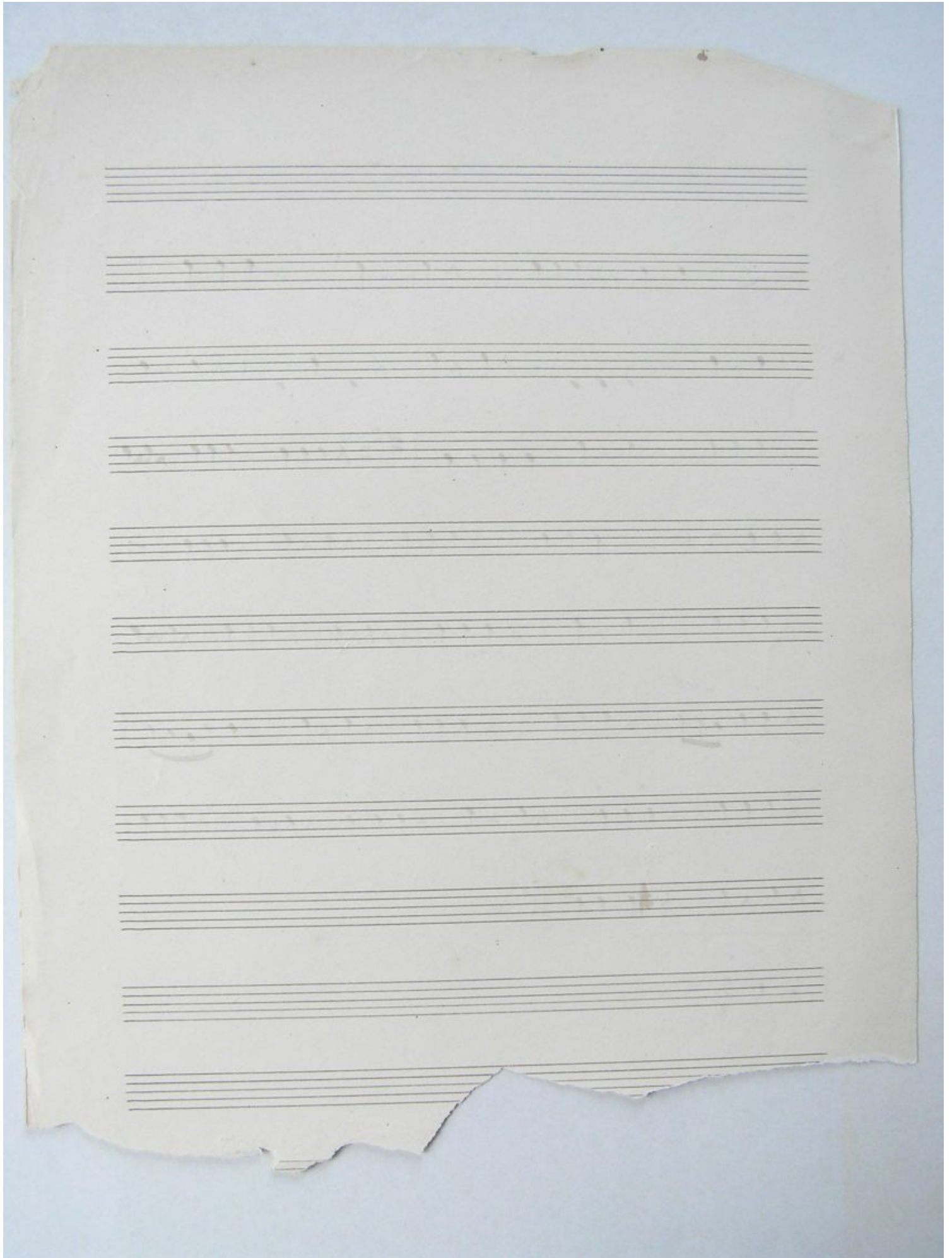
Director do Theatro do
EDEN-THEATRO
BELEM-PARA
(BRAZIL)

Fado do Gaanga

Viola

Tutto Pizzicato

Handwritten musical score for Viola, titled "Fado do Gaanga" by Raffaello Segre. The score is written on ten staves. It begins with a treble clef, a key signature of one sharp (F#), and a common time signature (C). The first staff has a dynamic marking of *f*. The second staff has a dynamic marking of *p*. The score includes various musical notations such as slurs, accents, and dynamic markings. The piece concludes with a double bar line and the word "Fina" written below the final staff.



RAFFAELLO SEGRE

Director do Orquestra do

EDEN-THÉATRO

BELEM—PARA

(BRAZIL)



RAFFAELLO SEGRE

Musica e Libretto di
EDEN HEATRO

MILANO - PAR
(1842)

Fado do Gaanga

Clarinete in La

Handwritten musical score for Clarinet in B-flat, titled "Fado do Gaanga" by Raffaele Segre. The score consists of 12 staves of music. It begins with a treble clef, a key signature of two flats (B-flat and E-flat), and a common time signature. The music features various rhythmic patterns, including eighth and sixteenth notes, and rests. There are dynamic markings such as "p." (piano) and "f" (forte). The score concludes with a double bar line, a key signature change to one flat (B-flat), and a final cadence. The word "Fine" is written at the bottom left of the page.



RAPHAEL LO BEGRE

Director of the Bureau of

EDUCATION

WASHINGTON - D. C.

(1887-1888)



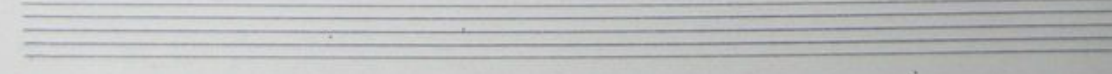
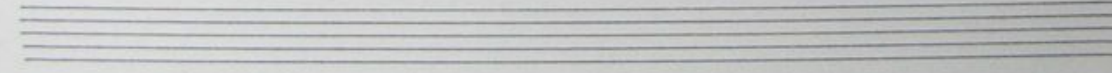
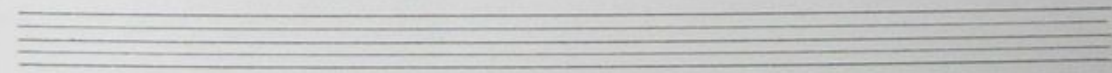
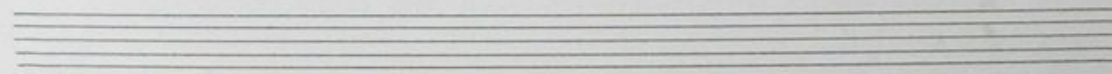
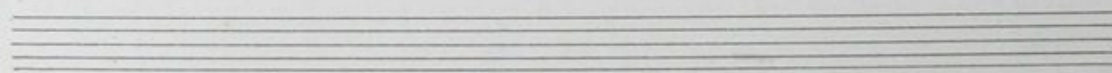
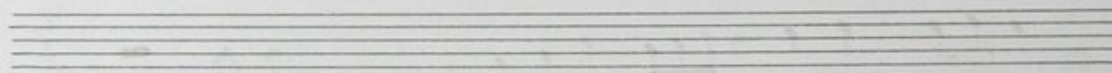
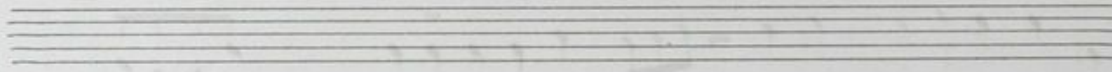
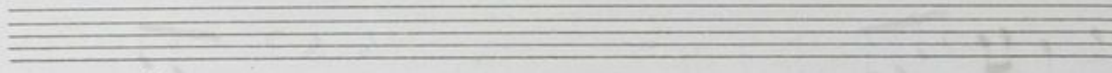
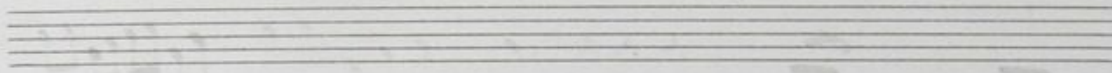
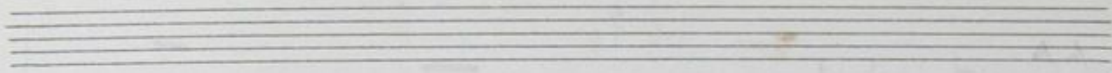
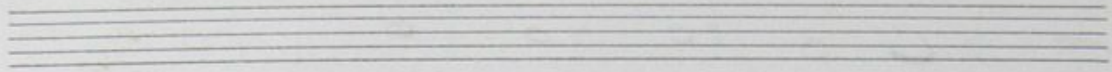
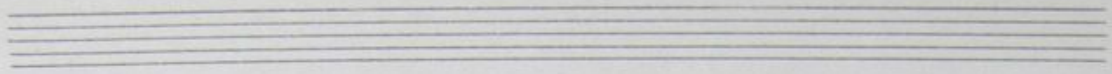
RAFFAELLO SEGRE

Director of Orchestra of
EDEN-THEATRO
BELEM-PARA
(BRAZIL)

Fado do Ganga

Pistone in La

Handwritten musical score for "Fado do Ganga" by Raffaele Segre. The score is written on ten staves. The first staff is a treble clef with a key signature of two flats (Bb, Eb) and a common time signature (C). It begins with a whole note chord, followed by a half note chord, and ends with a double bar line and a 6/8 time signature. The second staff is a bass clef with a key signature of two flats and a common time signature. It contains a half note chord, a quarter note chord, and a triplet of eighth notes. The third staff is a treble clef with a key signature of two flats and a common time signature. It contains a half note chord, a quarter note chord, and a series of eighth notes. The fourth staff is a bass clef with a key signature of two flats and a common time signature. It contains a half note chord, a quarter note chord, and a triplet of eighth notes. The fifth staff is a treble clef with a key signature of two flats and a common time signature. It contains a half note chord, a quarter note chord, and a series of eighth notes. The sixth staff is a bass clef with a key signature of two flats and a common time signature. It contains a half note chord, a quarter note chord, and a series of eighth notes. The seventh staff is a treble clef with a key signature of two flats and a common time signature. It contains a half note chord, a quarter note chord, and a series of eighth notes. The eighth staff is a bass clef with a key signature of two flats and a common time signature. It contains a half note chord, a quarter note chord, and a series of eighth notes. The ninth staff is a treble clef with a key signature of two flats and a common time signature. It contains a half note chord, a quarter note chord, and a series of eighth notes. The tenth staff is a bass clef with a key signature of two flats and a common time signature. It contains a half note chord, a quarter note chord, and a series of eighth notes. The score concludes with a double bar line and the word "Fine".



RAFFAELLO SEGRÉ

Director of Orchestra de

EDEN-THÉATRO

BELÉM-PARA

(BRAZIL)



RAFFAELLO SEGRE
Diretor do Theatro do
EDEN-THATRO
BELEM-PAR.
(BRAZIL)

Fado do Gaanga

Euphone

Handwritten musical score for Euphone. The score consists of five staves. The first staff is a treble clef with a common time signature (C) and contains a melodic line with various note values and rests. The second staff is a bass clef with a key signature of two sharps (F# and C#) and a 3/4 time signature, containing a bass line with notes and rests. The third staff is a treble clef with a 4/4 time signature, featuring a melodic line with many sixteenth notes and rests, marked with 'mf'. The fourth staff is a bass clef with a 6/8 time signature, containing a bass line with notes and rests, including a bracketed section with '1a e 2a' written above it. The fifth staff is a treble clef with a key signature of one sharp (F#) and contains a melodic line with notes and rests, marked with 'f' and 'Fria' written below it.



RAFFAELLO S. SEGRE

DIRETTORE DI ARCHIVISTIA DI

EDEN-THÉATRO

MELBOM-PARA

*

(BRAZIL)

*

RAFFAELLO SEGRE

Directeur du Théâtre de
EDEN-THEATRO

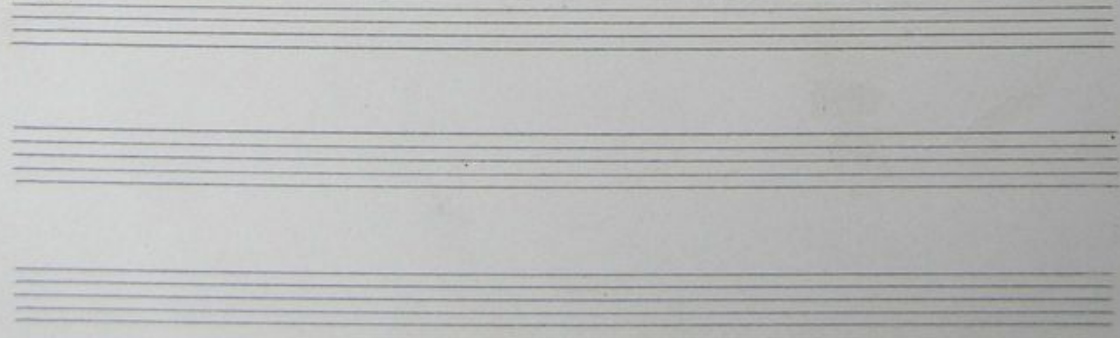
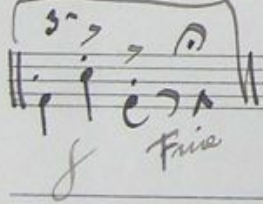
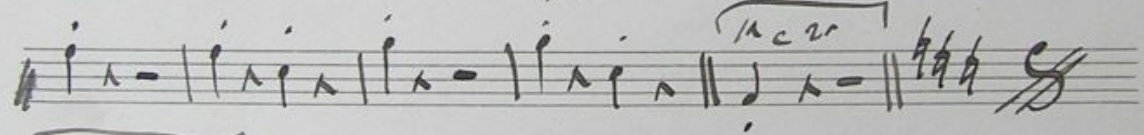
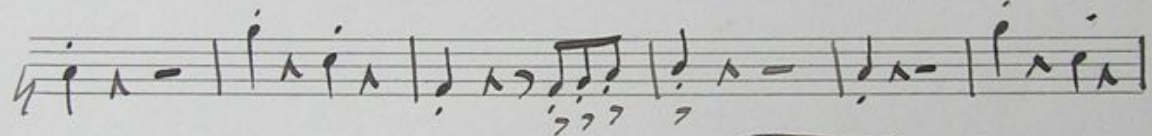
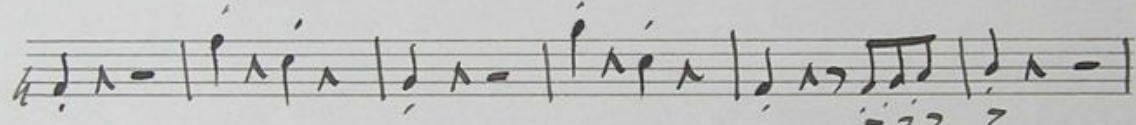
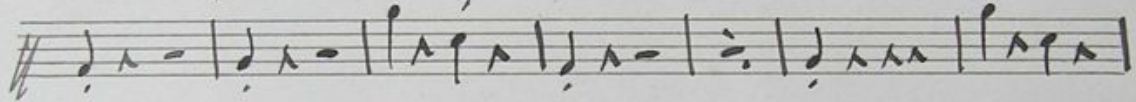
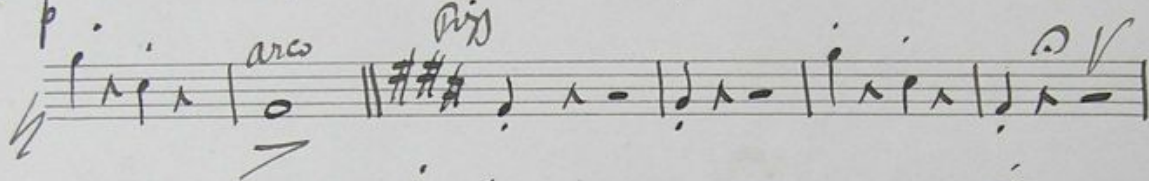
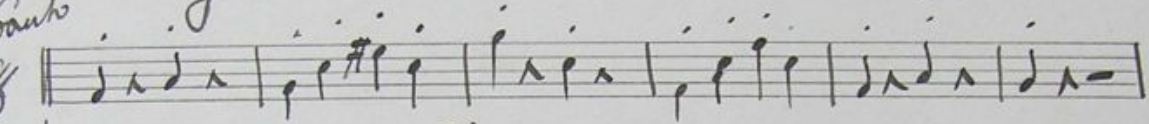
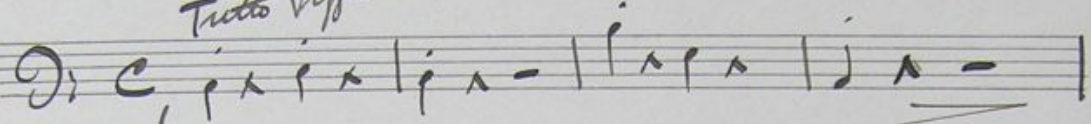
WELLEN-PARIS

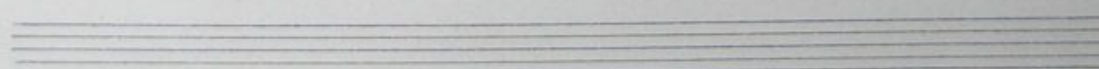
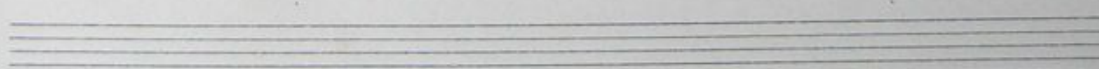
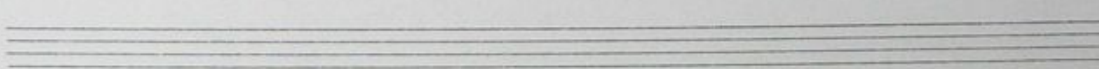
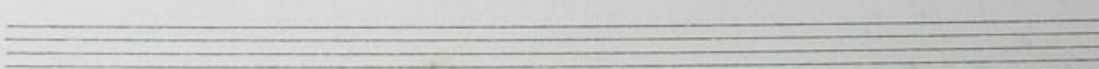
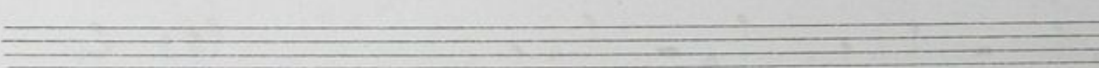
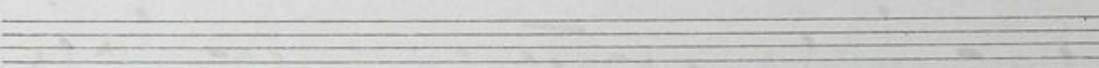
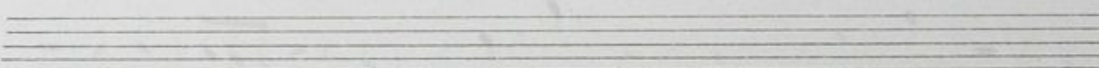
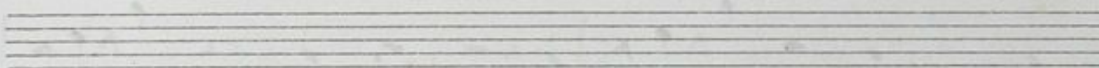
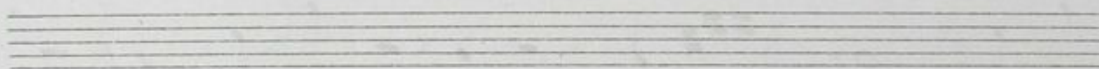
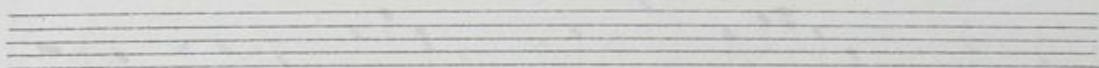
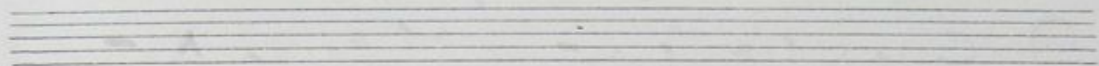
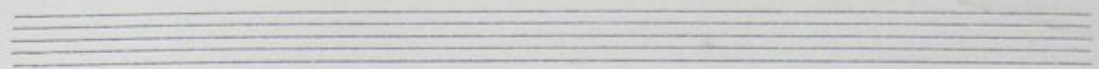
Fado do Gaanga

C. Basso

Tutto Pizzicato

Canto





RAFFAELLO SEGRE

Director of the Institute of

EDEN-THEATRO

WILLEM-PARK

(1888-1890)

h

LO SEGRE
Director da Orchestra do
EDEN-THEATRO
BELEM-PARA
(BRAZIL)

Fado do Gauga

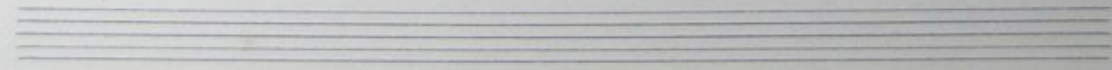
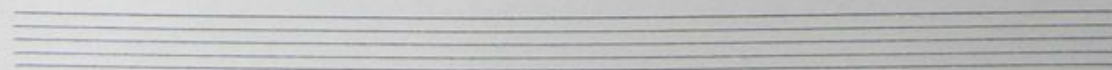
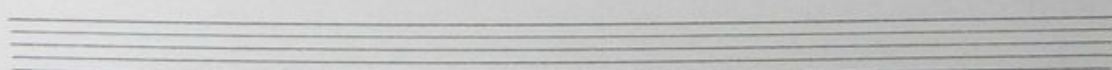
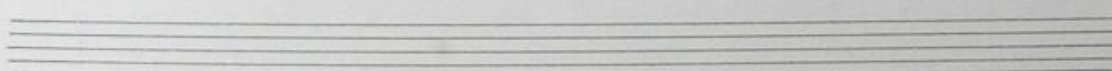
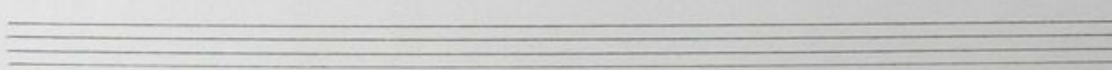
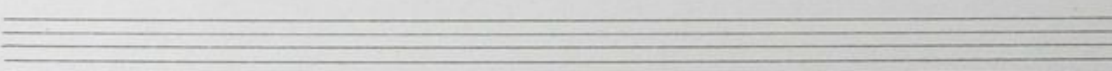
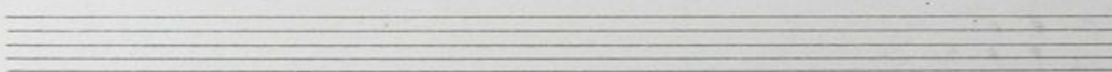
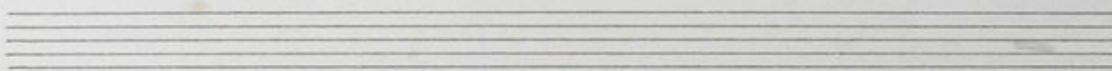
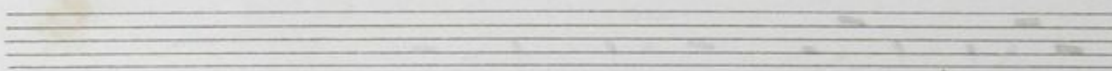
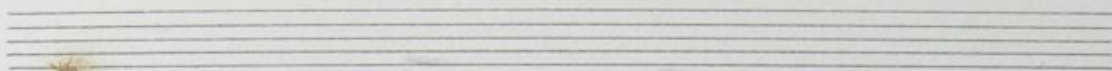
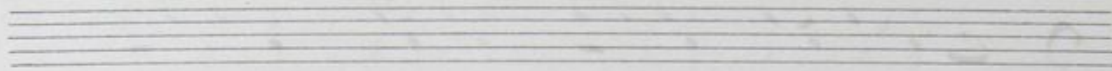
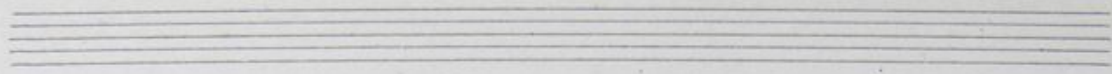
Batterie

Handwritten musical notation for the first system, including a treble clef, a key signature of one sharp (F#), and a common time signature (C). The notation consists of a melodic line with eighth and sixteenth notes, and a bass line with rhythmic markings: 8, 3, 7, and 7.

Handwritten musical notation for the second system, including a treble clef and a common time signature (C). The notation features a melodic line with notes marked with accents and dynamic markings like *B^oso* and *v*. The bass line includes a box containing the numbers 1^a e 2^a and a large number 2.

Handwritten musical notation for the third system, including a treble clef and a common time signature (C). The notation shows a melodic line with a triplet of eighth notes and a final note marked with a fermata. Below the staff, the word "F." is written on the left and "Fine" on the right.

Seven empty musical staves for further notation.



ALLO SEGRE

Director da Orchestra da

EDEN-TEATRO

BELLEM-PARA

(BRAZIL)



RAFFAELLO SEGRE

Director do Orchestra do

EDEN-THEATRO

BELEM-PARA

(BRAZIL)

Fado do Ganga

Violino 2^o

Tutti Peççicato

Cruh

This image shows a page of handwritten musical notation on aged, yellowed paper. The page contains ten horizontal staves, each consisting of five lines. The notation is written in dark ink and includes various musical symbols such as notes, rests, and stems. The notes are mostly eighth and sixteenth notes, often beamed together. The paper shows signs of wear, including creases and discoloration, particularly at the corners. The handwriting is somewhat faint and the ink is slightly faded, suggesting the manuscript is quite old. The overall appearance is that of a historical or archival musical score.

RAFFAELLO SEGRE

Director do Orquestra do

EDEN-THÉATRO

BRUXELAS—PARIS

(BRAZIL)



RAFFAELLO SEGRE

Director do Instituto de
EDEN-TEATRO
BELEM-PARA

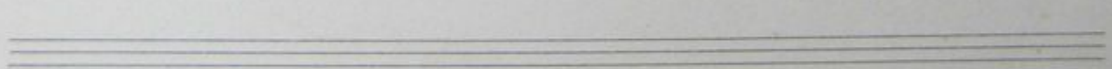
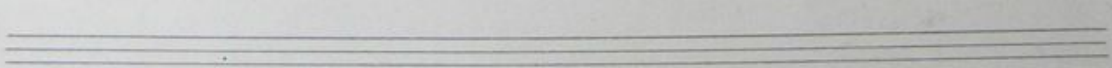
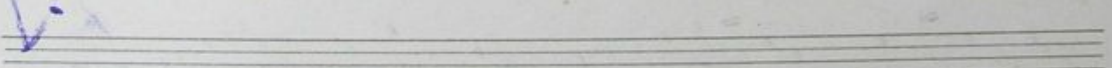
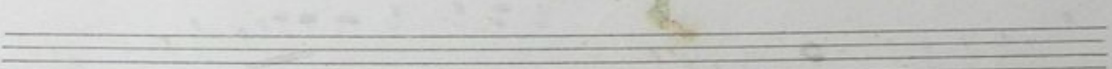
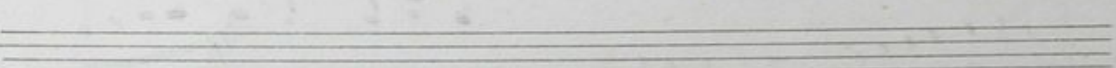
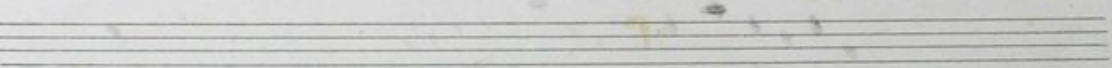
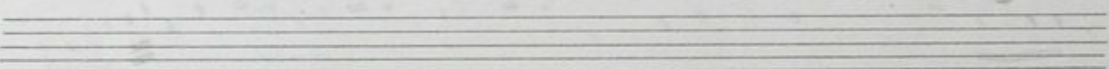
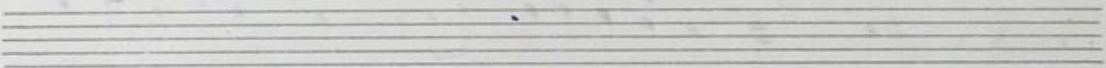
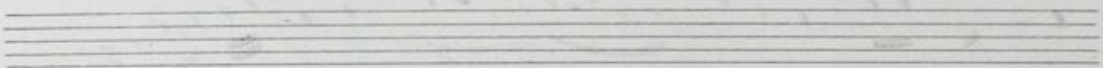
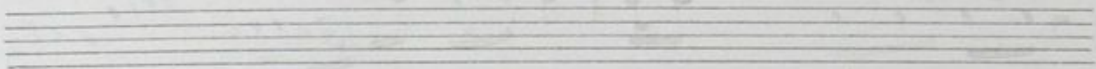
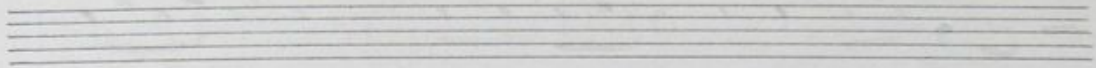
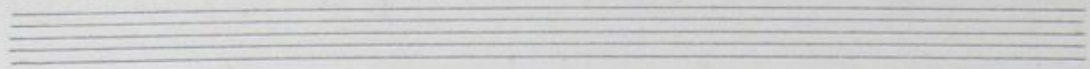
Fado do Gaucho

Flauto

Handwritten musical score for Flute titled "Fado do Gaucho" by Raffaello Segre. The score is written on ten staves. It begins with a treble clef, a common time signature (C), and a key signature of one sharp (F#). The music features various rhythmic patterns, including eighth and sixteenth notes, and rests. There are several dynamic markings: "f" (forte) at the beginning, "p" (piano) in the middle, and "Mez." (mezzo-forte) near the end. There are also performance instructions like "1a", "2a", and "3a" above certain passages. The piece concludes with a double bar line and a final flourish.

la mi do mi la mi

f Fine



RAFFAELLO SEGRE

Director of the Institute for

EDEN-HEATH

BELM-PARK

(DUBLIN)



RAFFABLO SEGRE

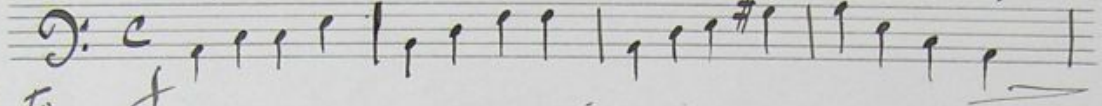
Director do Theatro de
EDEN - THEATRO

BELEM - PAR
(BRAZIL)

Fado do Gaúcho

Vello

Pizz



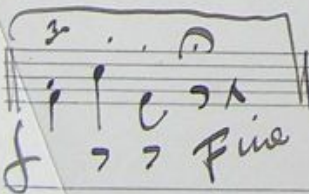
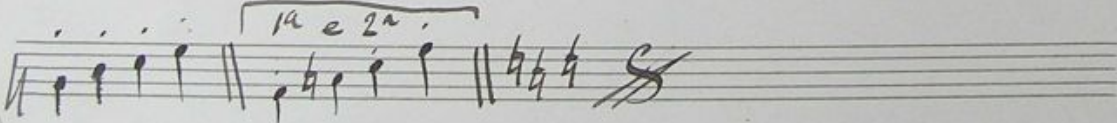
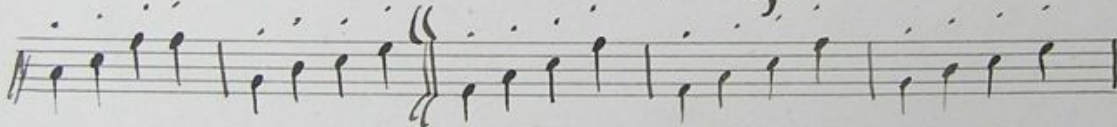
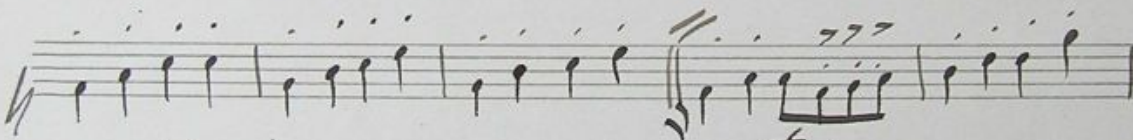
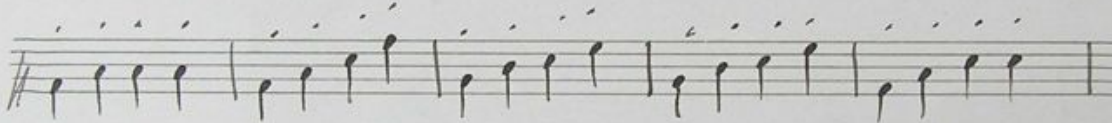
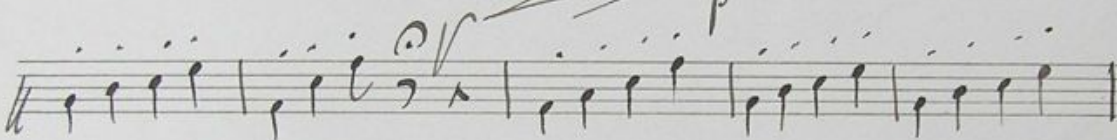
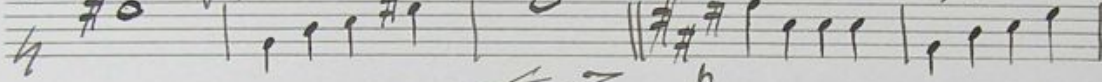
Canto

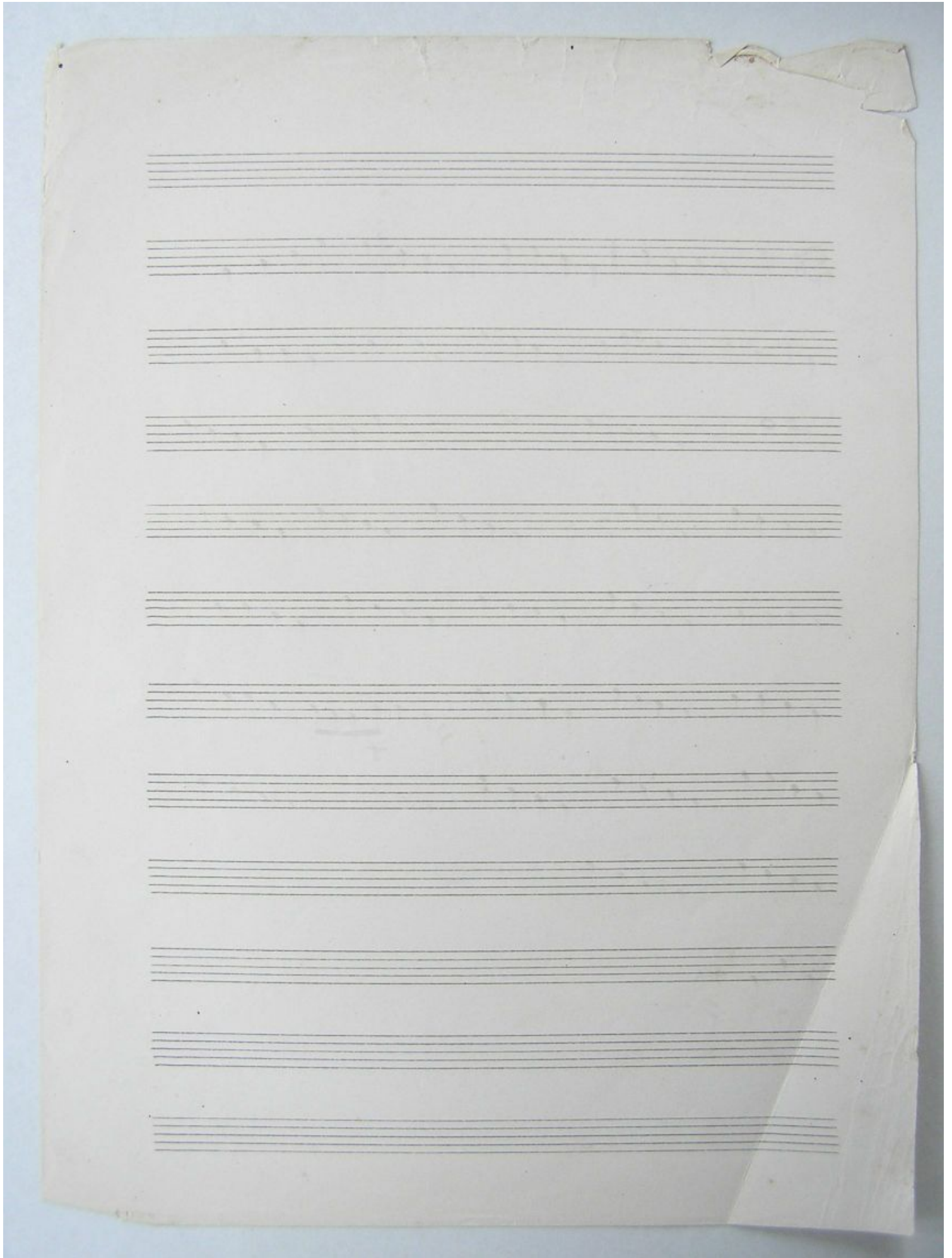


Parco

Pizz

arco





RAPHAEL LO SEGRE

Director do Instituto do

EDEN-TEATRO

BELÉM—PARÁ

(BRAZIL)



RAFFAELLO SEGRE
Director of the Theatre of
EDEN THEATRO
BELEM - PAR.
(BRAZIL)

Fado do Gaúcho

Violino 1^o

Pizz

arco

p

Pizz

arco

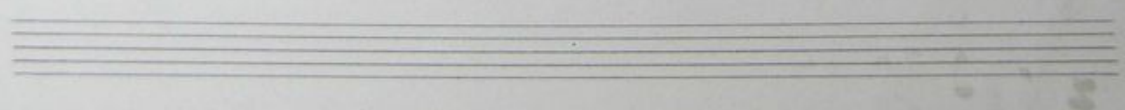
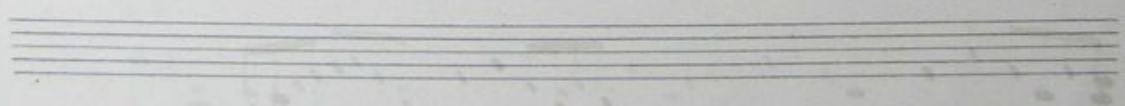
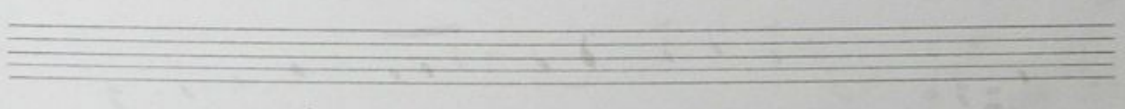
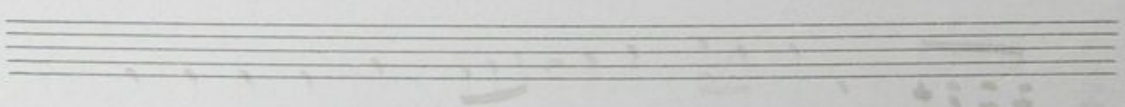
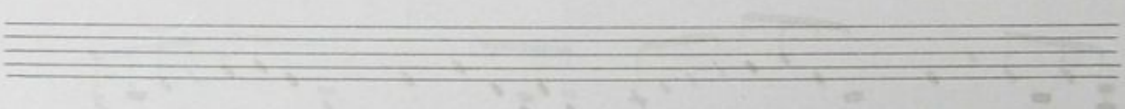
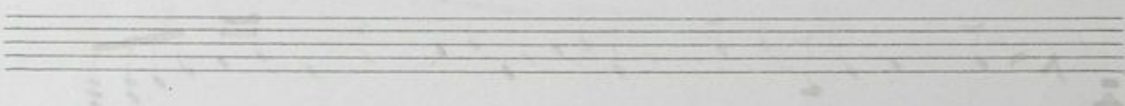
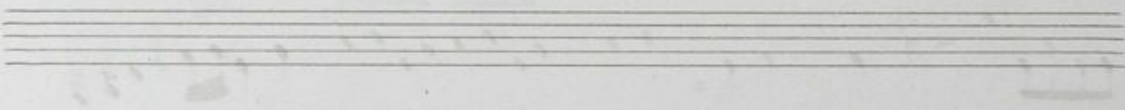
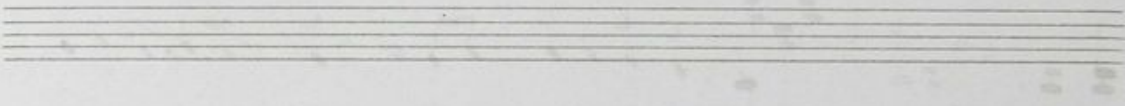
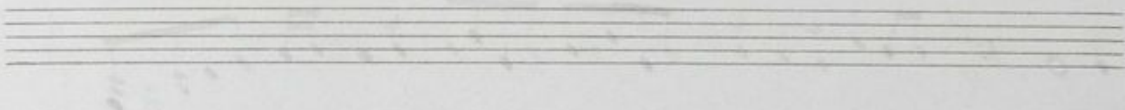
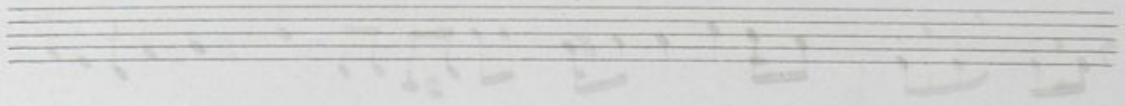
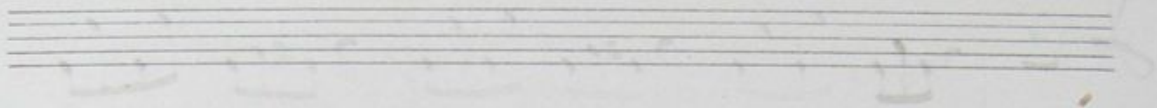
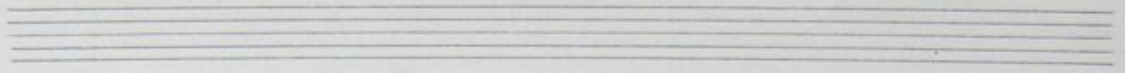
Pizz

1^a e 2^a

3^a

f

Fine



RAFFAELLO SEGRE

Director of Orchestra do

EDEN-HEATRO

BETHEM-PARRA

(BRAZIL)

